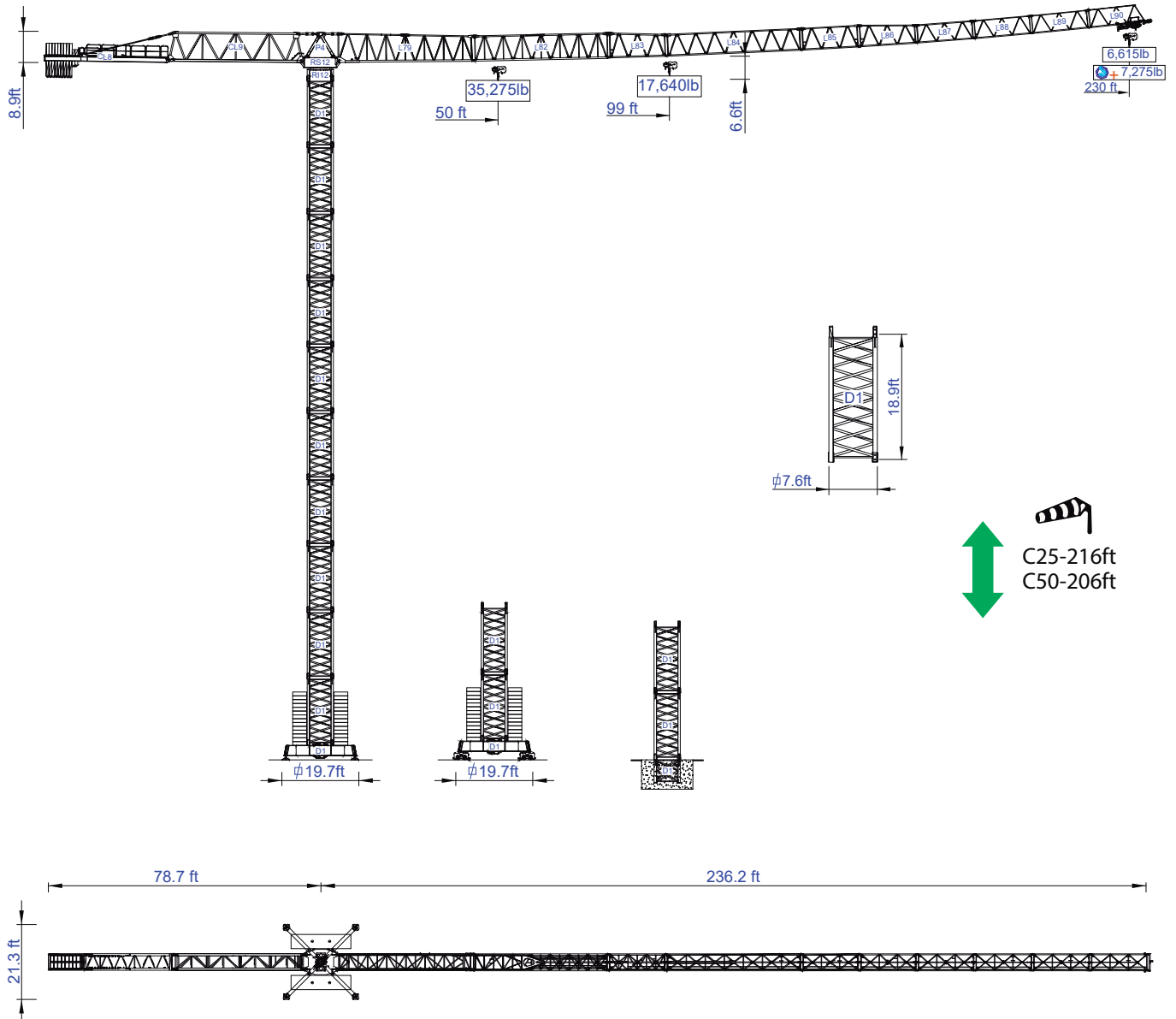




# STAFFORD SOIMA TOWER CRANES

## SGT 7030TL

Data Sheet  
Imperial



### Headquarters

3620 S. 40th Street, Phoenix, AZ, 85040 USA

+1 (480) 993 3302

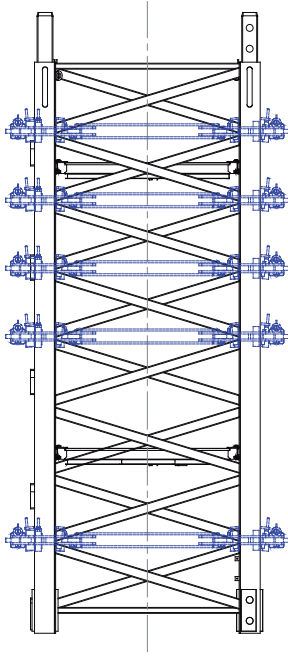
### Factory

+351 232 673 530 [info@staffordsoima.com](mailto:info@staffordsoima.com)

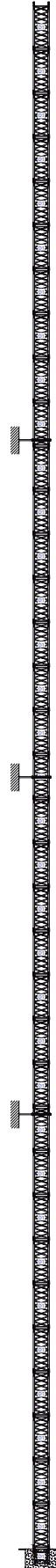
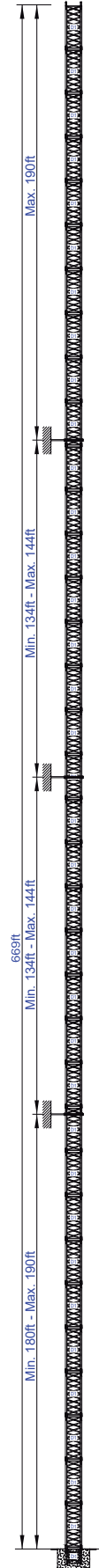
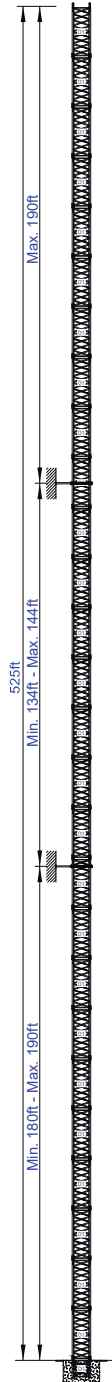
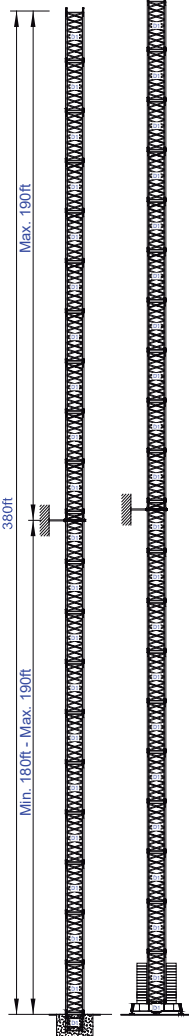
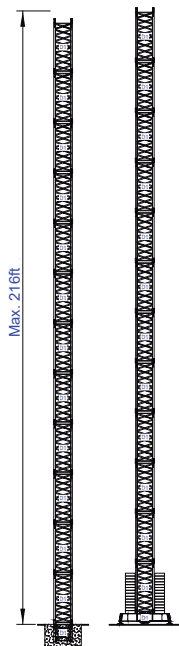
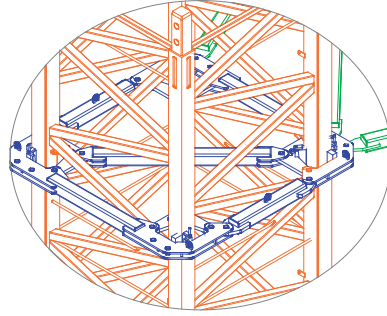
[www.staffordsoima.com](http://www.staffordsoima.com)

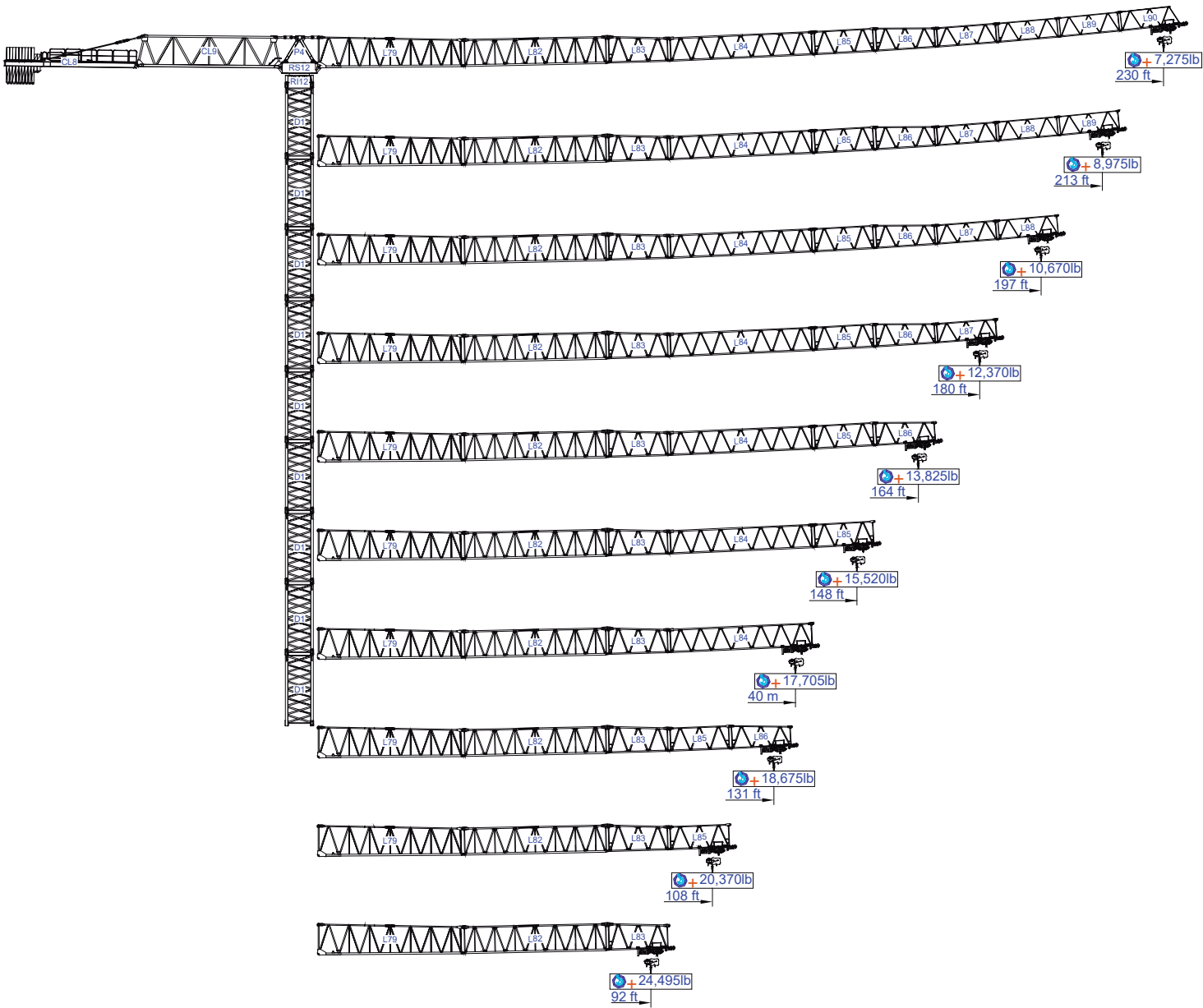


Empresa certificada no âmbito da Conceção, Fabrico e Serviço Pós-venda de Gruas Soima e componentes




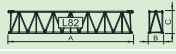
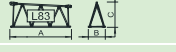
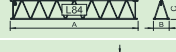
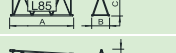
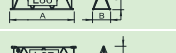

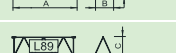
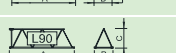


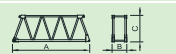

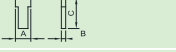
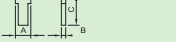

More options

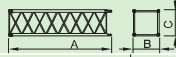
















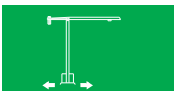
ft	Diagram	Diagram		ft																ft
		44,090lb	22,050lb	33	49	66	82	92	108	125	131	148	164	180	197	213	230	lb		
262	61,730lb 13x4,410lb + 2x2,205lb	46,6	92,2	22,050	22,050	22,050	21,690	19,180	16,010	13,670	12,900	11,270	9,960	8,900	8,010	7,260	6,610	lb		
				44,090	36,010	26,240	20,370	17,860	14,680	12,350	11,570	9,950	8,640	7,580	6,690	5,940	5,290			
246	61,730lb 13x4,410lb + 2x2,205lb	50,5	100,4	22,050	22,050	22,050	22,050	21,270	17,780	15,210	14,360	12,570	11,130	9,960	8,980	8,160	lb			
				44,090	39,900	29,160	22,710	19,940	16,450	13,880	13,030	11,240	9,810	8,640	7,660	6,830				
230	61,730lb 13x4,410lb + 2x2,205lb	54,8	108,6	22,050	22,050	22,050	22,050	22,050	19,080	16,340	15,430	13,520	11,990	10,740	9,700	lb				
				44,090	42,770	31,310	24,430	21,480	17,760	15,010	14,110	12,200	10,670	9,420	8,380					
213	59,525lb 13x4,410lb + 1x2,205lb	58,7	116,5	22,050	22,050	22,050	22,050	22,050	19,920	17,060	16,120	14,130	12,540	11,240	lb					
				44,090	44,090	32,680	25,530	22,460	18,590	15,740	14,800	12,810	11,220	9,920						
197	57,320lb 13x4,410lb	62,7	124,0	22,050	22,050	22,050	22,050	22,050	19,950	17,090	16,150	14,160	12,570	lb						
				44,090	44,090	32,740	25,570	22,500	18,630	15,770	14,830	12,840	11,240							
180	52,911lb 11x4,410lb + 2x2,205lb	61,7	122,0	22,050	22,050	22,050	22,050	22,050	19,880	17,030	16,090	14,110	lb							
				44,090	44,090	32,630	25,490	22,420	18,560	15,710	14,770	12,790								
164	48,502lb 10x4,410lb + 2x2,205lb	59,7	118,4	22,050	22,050	22,050	22,050	22,050	19,880	17,030	16,090	lb								
				44,090	44,090	32,630	25,490	22,420	18,560	15,710	14,770									
157	46,300lb 10x4,410lb + 1x2,205lb	61,7	122,4	22,050	22,050	22,050	22,050	22,050	19,810	16,980	lb									
				44,090	44,090	32,520	25,400	22,350	18,490	15,650										
141	41,890lb 9x4,410lb + 1x2,205lb	62,0	122,7	22,050	22,050	22,050	22,050	22,050	19,840	lb										
				44,090	44,090	32,560	25,430	22,380	18,520											
125	39,693lb 9x4,410lb	60,7	120,1	22,050	22,050	22,050	22,050	22,050	lb											
				44,090	44,090	32,410	25,310	22,270												

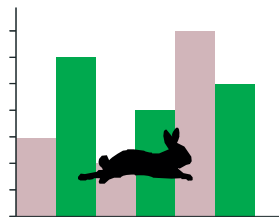
			A (ft)	B (ft)	C (ft)	lb	
Jib / Lança / Fleche / Braccio		L79	39.30	5.10	8.40	20,500	
/ Ausleger / кливер		L82	39.40	4.80	7.50	8,160	
		L83	17.30	4.80	7.30	2,870	
		L84	39.30	4.80	6.40	4,850	
		L85	17.10	4.80	6.40	1,760	
		L86	17.00	4.80	6.30	1,430	
		L87	17.00	4.80	5.30	1,150	
		L88	16.90	4.80	6.20	880	
		L89	16.90	4.80	5.20	770	
		L90	16.60	4.80	5.20	880	
	Head turntable / Cabeçote / Pivot / Testa giradischi / Kopfplattenspieler		RS12 RI12	11.30	7.20	7.60	27,560
			P4	8.50	4.80	3.40	3,970
Counter-jib / Contra lança / Contre-fleche		CL9	38.50	4.80	8.60	11,820	
		CL8	35.80	4.70	2.20	5,730	
Counterweight / Contrapeso / Contrepoids / Gegengewicht / Противовес		CP4	5.20	0.80	5.20	2x2,205 4,410	
		CP5	3.30	0.80	11.20	9x4,410 36,690	


			A (mm)	B (mm)	C (mm)	kg
Tower section / torre / Coupe tour / Sezione torre / Turmabschnitt / Секция башни		D1	20.50	7.60	7.60	10,030
		D1	11.00	7.60	7.60	5,690
Foundation anchor / Tramo encastrar /		D1	8.20	7.60	7.60	4,410

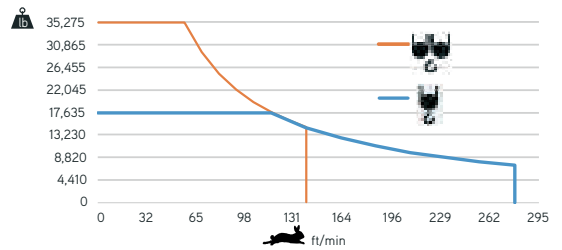
Base Chassis		D1	28.60	2.60	5.20	12,130
			13.80	1.20	5.20	2x6,120 12,240 24,370


Climbing tower section		TL1	9.30	8.50	7.50	5,880
Climbing cage		TL3	39.20	1.00	8.40	8,050
		TL3	39.20	0.80	8.40	2x4,490 8,980
		TL4	15.60	0.90	8.40	3,310

	
	0 a 1 r.p.m. 3x6,5 daN.m
	0 a 196 ft/min 7,5 kW
	0-32 ft/min 4x5,5 kW

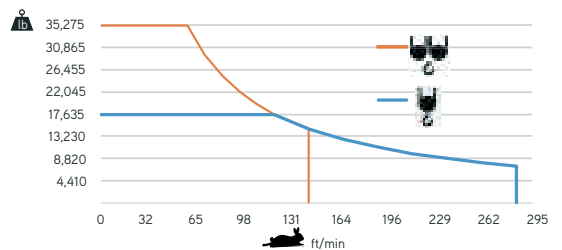



	
	0 a 278 ft/min 0 a 139 ft/min
55 kW	



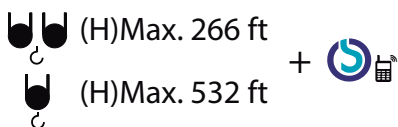
	100 kVA 400 V +- 5% (50/60 Hz)
--	-----------------------------------

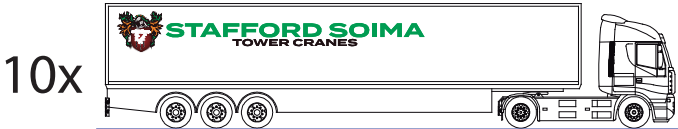
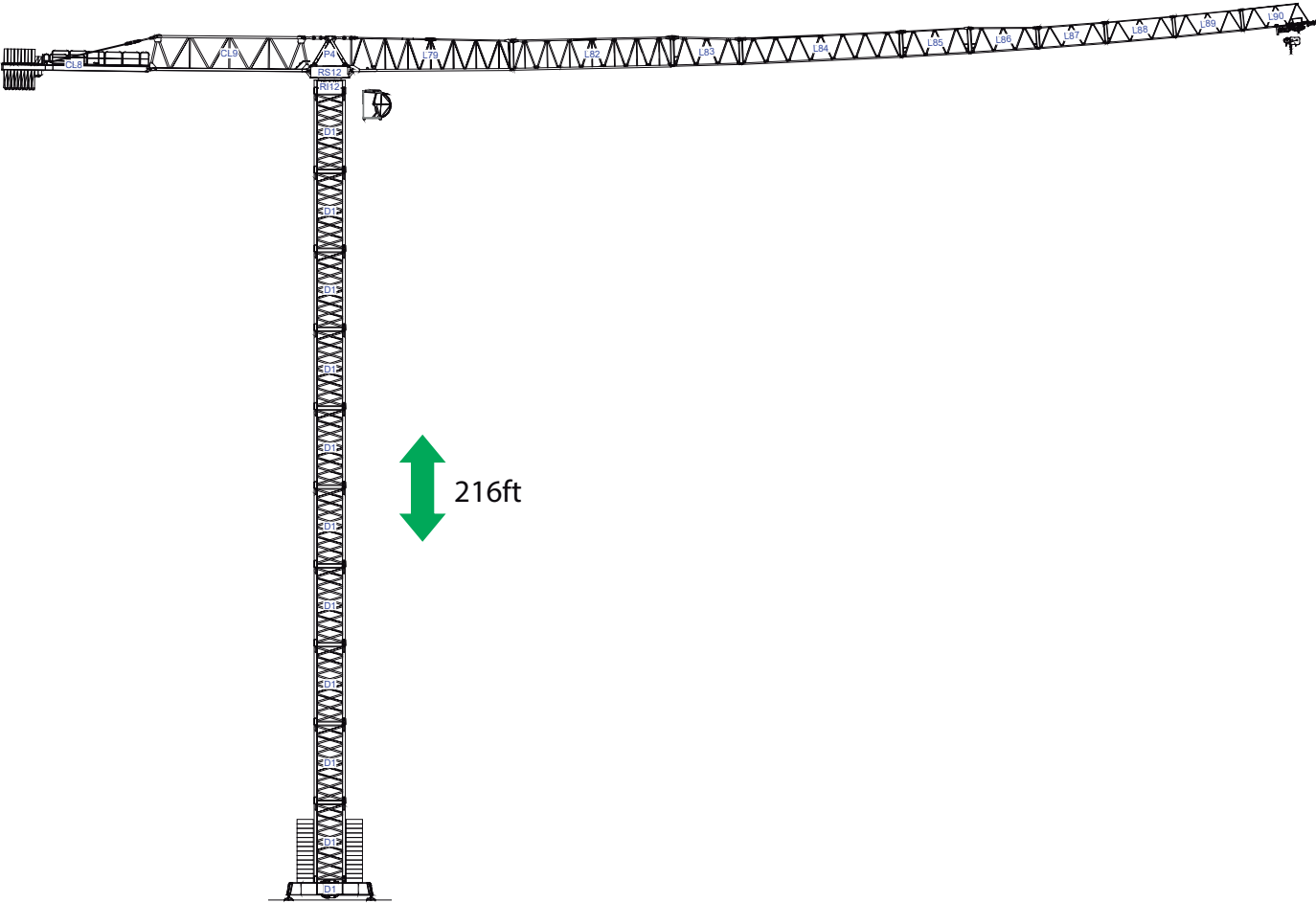
	
	0 a 347 ft/min 0 a 174 ft/min
75 kW	



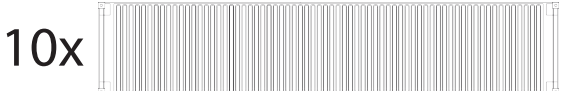
	130 kVA 400 V +- 5% (50/60 Hz)
--	-----------------------------------

Max height of hoist



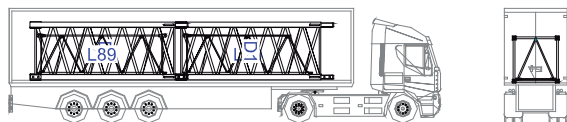


/

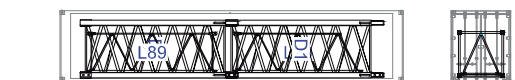


40' High Cube

1

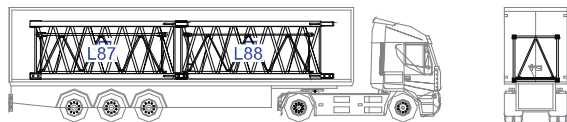


2xD1-L89-L90

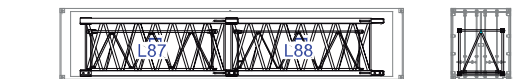


2xD1-L89-L90

2

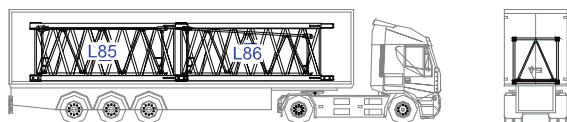


2xD1-L87-L88



2xD1-L87-L88

3

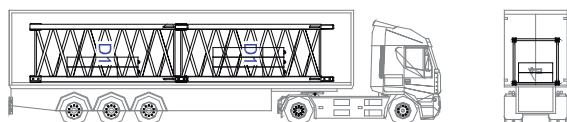


2xD1-L85-L86

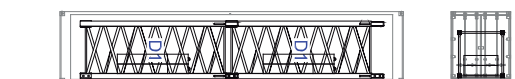


2xD1-L85-L86

4

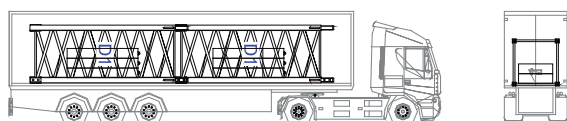


2xD1-2xCP5-1xCP4



2xD1-2xCP5-1xCP4

5

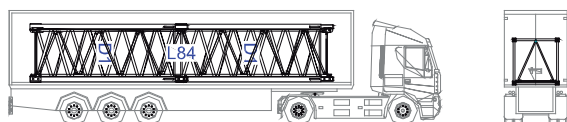


2xD1-2xCP5-2xCP4

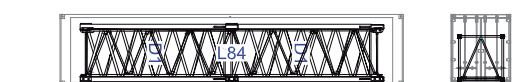


2xD1-2xCP5-2xCP4

6

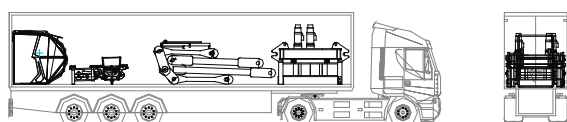


2xD1-L84

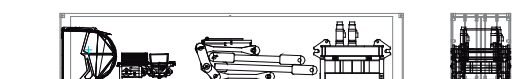


2xD1-L84

7

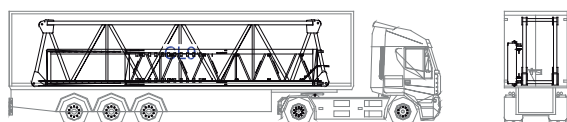


P4-RS12-RI11-CB1-TP2-TS2

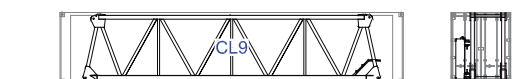


P4-RS12-RI11-CB1-TP2-TS2

8

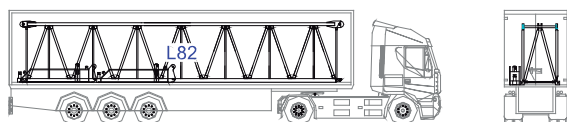


CL9-CL8



CL9-CL8

9

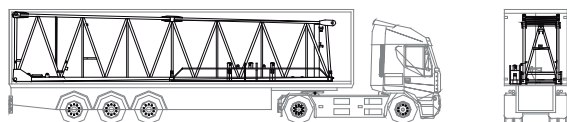


L82-2XCH.D1



L82-2XCH.D1

10



L79-CH.D1



L79-CH.D1

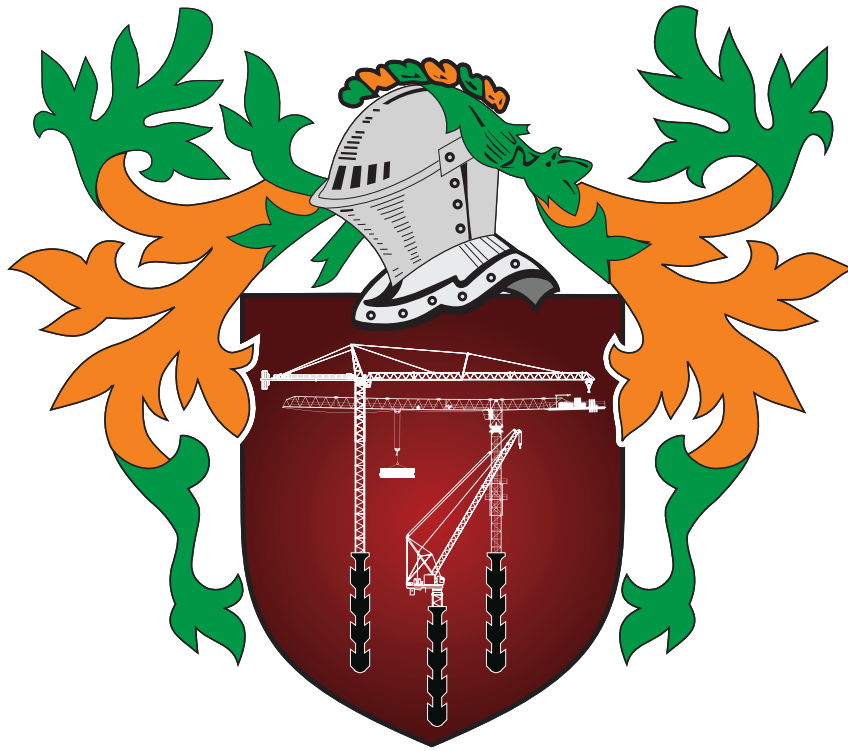













# STAFFORD SOIMA

## TOWER CRANES

### STAFFORD SOIMA, SA

#### *Headquarters*

 3620 S. 40th Street , Phoenix , AZ, 85040 USA

 +1 (480) 993 3302

#### *Factory*

 Zona Industrial de Canas de Senhorim - EN 234, 3525-040 Canas de Senhorim - Portugal

 +351 232 673 530  [info@staffordsoima.com](mailto:info@staffordsoima.com)

 [staffordsoima.com](http://staffordsoima.com)