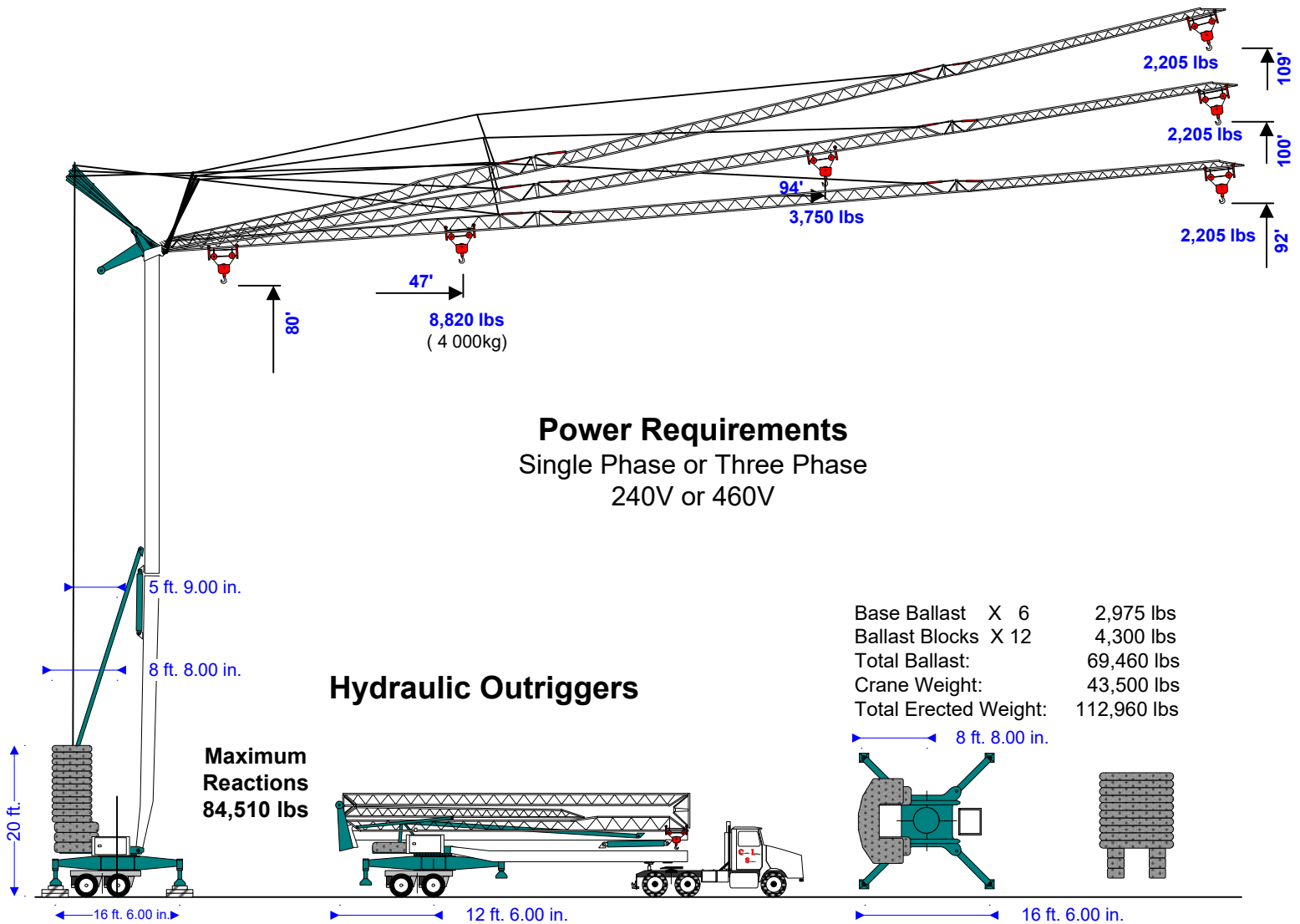




VICARIO

Self-Erecting Crane V 22147/92

(2,205 lbs, 147'92")



Power Requirements
Single Phase or Three Phase
240V or 460V

Hydraulic Outriggers

Base Ballast X 6 2,975 lbs
Ballast Blocks X 12 4,300 lbs
Total Ballast: 69,460 lbs
Crane Weight: 43,500 lbs
Total Erected Weight: 112,960 lbs

	Hook	Ft.	48	52	66	79	92	105	118	131	147
	Radius	Meters	14.5	16	20	24	28	32	36	40	44.75
2 Part	147'	Lbs	8,820	7,762	5,909	4,741	3,859	3,330	2,889	2,536	2,205
Block	45m	KG	4.000	3.520	2.680	2.150	1.750	1.510	1.310	1.150	1.000