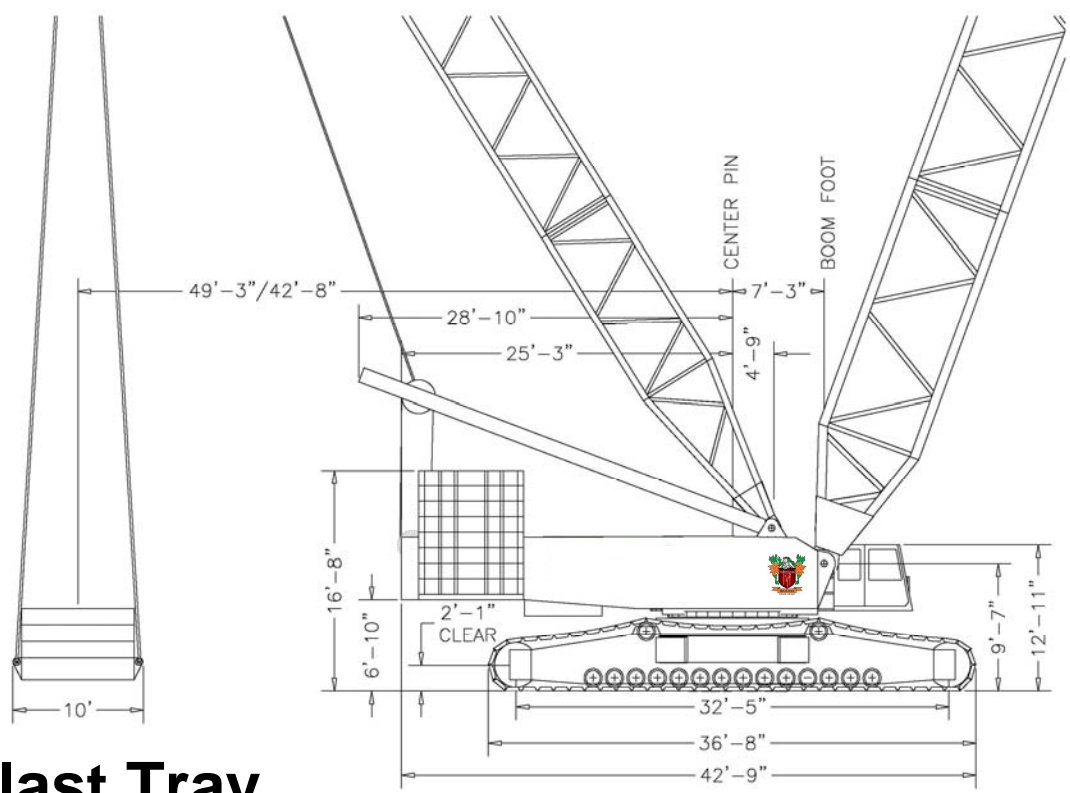
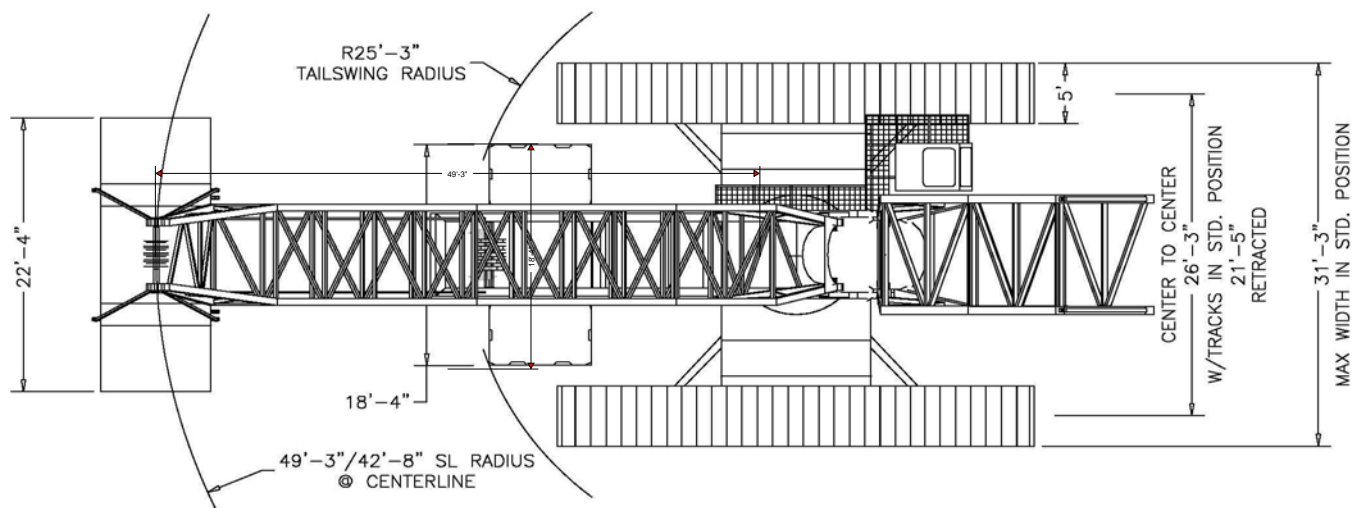


Demag CC2600

600T

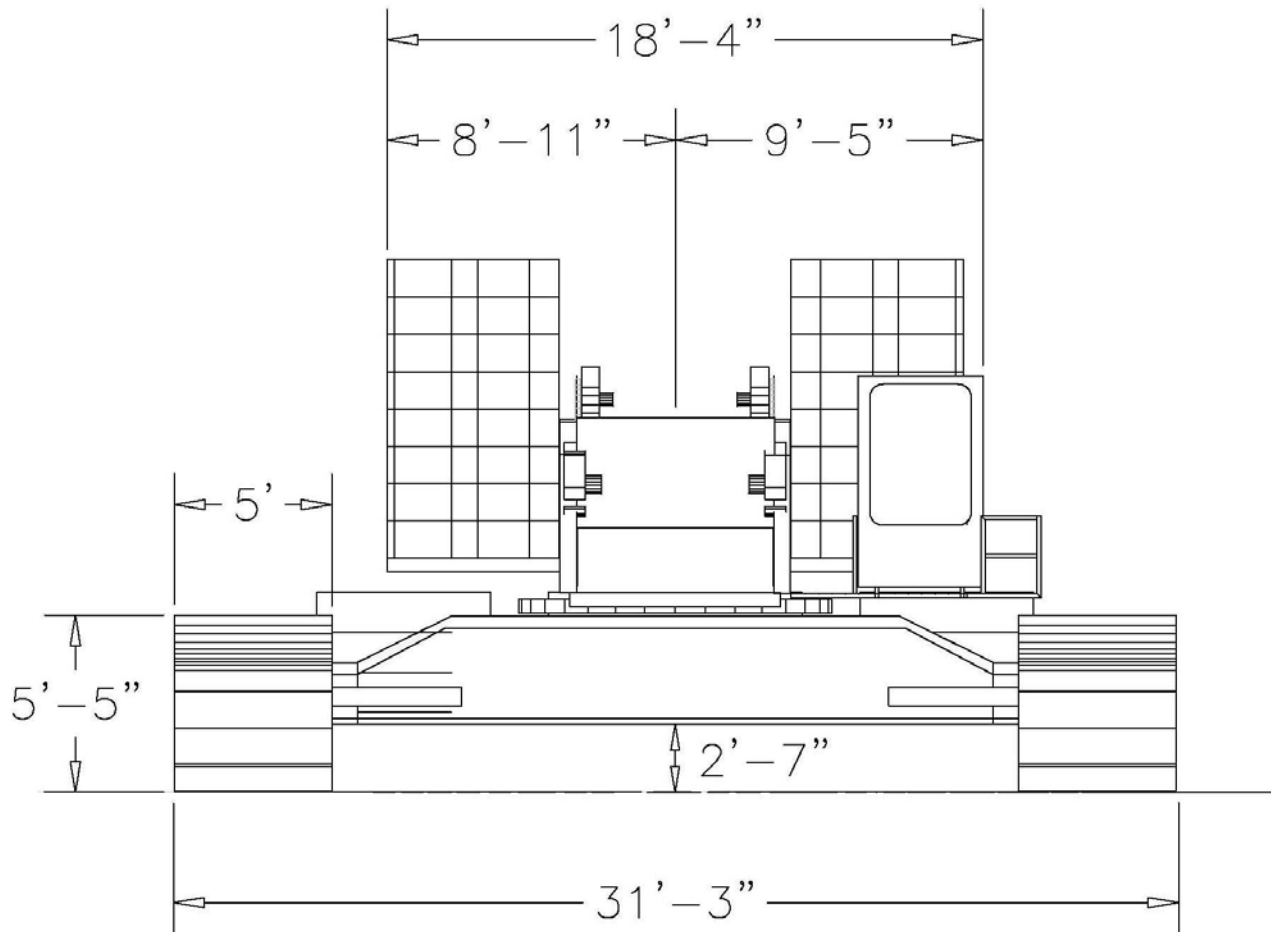


Ballast Tray



Demag CC2600

600T



Demag CC2600

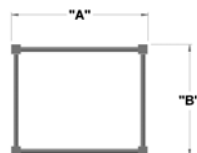
600T



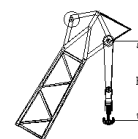
Component Weights	
Weight of counterweighted Machine with 59' (12m) boom	734,000 lbs
Superstructure only (with 4 drums, boom foot section and mast)	116,000 lbs
Carbody	64,000 lbs
Side frame (x two)	90,000 lbs
Basic Counterweight	328,800 lbs
Superlift Counterweight	551,000 lbs

Cables	Line Pull	Diameter
Main Hoist	28,000 lbs	28 mm
Aux Hoist	28,000 lbs	28 mm

Boom	"A"	"B"
Main	9'-9"	8'-0"
Luffer	7'-6"	5'-10"
Mast	7'-6"	5'-10"



Hook-Block Capacity	Number of Sheaves	Weight	"B"
550T	2 x 11	20,800 lbs	15'
330T	14	11,243 lbs	11'
122T	6	4,938 lbs	8'
35T	1	2,557 lbs	6'



Demag CC2600

600T

Symbols & Notes



Crawler Crane



Truck Crane



Ring Mounted Crane



Main Counterweight



Main Boom



Main Boom with Luffing Jib



Tower Configuration



Superlift Attachment with Tray

General Use Notes

1. Capacity charts represent capacities for normal use. Additional load cases, special configurations and engineered lifts are available. Consult Barnhart engineering.
2. All cranes have wind speed restrictions available in the operating manual.
3. Capacities assume level and suitable ground conditions
4. Load block, rigging and other lifting devices are considered part of the lifted load.
5. Some long boom configurations require an assist crane for erection. Consult Barnhart.

Demag CC2600



26'



164 Tons



Lift Radius (ft)	Lift Capacity (Tons)												
	Main Boom Length (ft)												
	59 ¹	79 ¹	98 ¹	118	138	157	177	197	216	236	256 ²	276 ²	295 ²
18	498.1	-	-	-	-	-	-	-	-	-	-	-	-
19	452.4	447.1	-	-	-	-	-	-	-	-	-	-	-
23	395.4	410.7	407.4	406.3	-	-	-	-	-	-	-	-	-
26	367.2	366.3	364.0	361.9	359.0	342.5	-	-	-	-	-	-	-
29	310.3	309.0	307.8	325.9	323.7	319.3	317.2	309.7	-	-	-	-	-
33	246.1	245.0	243.9	264.7	263.6	262.5	261.4	260.3	260.3	246.3	-	-	-
39	186.7	185.6	184.5	200.2	199.1	198.0	196.9	195.8	194.8	192.9	191.9	187.4	156.1
46	144.1	143.0	141.9	152.9	151.8	150.7	149.6	148.5	147.4	147.4	148.5	145.2	143.0
52	121.0	118.8	117.7	127.7	125.6	124.5	123.4	122.3	121.2	121.2	120.3	119.0	117.8
59	100.5	98.3	97.2	104.9	103.8	102.7	101.6	100.5	99.4	98.3	97.2	96.1	95.0
65	-	86.1	85.0	91.7	89.6	88.5	87.4	86.3	85.2	84.1	83.0	81.9	80.8
72	-	74.2	73.1	78.6	77.5	75.3	75.3	73.1	72.0	70.9	69.8	68.7	67.6
79	-	-	63.7	69.1	66.9	65.8	64.7	63.6	62.5	61.4	60.3	59.2	58.1
85	-	-	57.6	62.1	59.9	58.8	57.7	56.6	55.5	54.4	53.3	52.2	51.1
92	-	-	51.7	55.0	53.9	51.7	50.6	49.5	48.4	47.3	46.2	45.1	44.0
98	-	-	-	50.0	48.9	46.7	45.6	44.5	43.4	42.2	41.1	39.0	37.9
111	-	-	-	-	40.1	38.9	37.8	35.6	34.5	33.4	31.3	30.1	29.0
124	-	-	-	-	33.4	32.3	31.2	29.0	27.9	25.8	24.6	23.5	21.3
138	-	-	-	-	-	26.4	25.3	23.1	22.0	19.8	18.7	16.5	15.4
151	-	-	-	-	-	-	20.9	18.7	17.6	15.4	14.3	12.1	11.0
164	-	-	-	-	-	-	-	15.4	13.2	12.1	9.9	8.8	7.7
177	-	-	-	-	-	-	-	11.1	10.0	8.9	6.7	-	-
190	-	-	-	-	-	-	-	-	7.8	5.6	-	-	-

¹⁾ 144 T counterweight

²⁾ Boom erection with auxiliary crane only

Demag CC2600



26'



164 Tons

88°



Main Boom (ft)	Lift Radius (ft)	Lifting Capacity						
		Luffing Jib (ft)						
		79'	98'	118'	138'	157'	177'	197'
98'	46	159.8	-	-	-	-	-	-
	52	131.2	130.1	-	-	-	-	-
	59	111.3	110.2	109.1	108.0	-	-	-
	66	95.9	94.8	94.8	93.7	93.7	-	-
	72	84.9	83.8	82.7	81.6	81.6	80.5	-
	79	75.0	73.9	73.9	72.8	72.8	71.7	70.5
	85	67.2	66.1	66.1	65.0	65.0	63.9	63.9
	92	-	59.5	59.5	58.4	58.4	57.3	57.3
	98	-	55.1	54.0	52.9	52.9	51.8	51.8
	112	-	-	45.2	44.1	44.1	44.1	43.0
	125	-	-	38.6	37.5	37.5	37.5	36.4
	138	-	-	-	33.1	32.0	32.0	30.9
	151	-	-	-	-	28.7	27.6	27.6
164	-	-	-	-	25.4	24.3	23.1	
177	-	-	-	-	-	20.9	20.9	
190	-	-	-	-	-	-	18.7	
118'	46	158.7	-	-	-	-	-	-
	52	131.2	130.1	-	-	-	-	-
	59	110.2	109.1	109.1	-	-	-	-
	66	95.9	94.8	93.7	92.6	92.6	-	-
	72	83.8	82.7	82.7	81.6	81.6	80.5	-
	79	75.0	73.9	72.8	71.7	71.7	71.7	70.5
	85	67.2	66.1	65.0	63.9	63.9	63.9	62.8
	92	-	59.5	58.4	58.4	57.3	57.3	56.2
	98	-	54.0	54.0	52.9	52.9	51.8	51.8
	112	-	-	45.2	44.1	44.1	43.0	43.0
	125	-	-	38.6	37.5	37.5	36.4	36.4
	138	-	-	-	32.0	32.0	32.0	30.9
	151	-	-	-	-	27.6	27.6	26.5
164	-	-	-	-	24.3	24.3	23.1	
177	-	-	-	-	-	20.9	20.9	
190	-	-	-	-	-	-	17.6	
138'	46	157.6	-	-	-	-	-	-
	52	130.1	129.0	-	-	-	-	-
	59	110.2	109.1	108.0	-	-	-	-
	66	94.8	93.7	93.7	92.6	-	-	-
	72	83.8	82.7	81.6	80.5	80.5	80.5	-
	79	73.9	72.8	72.8	71.7	71.7	70.5	70.5
	85	66.1	65.0	65.0	63.9	63.9	62.8	62.8
	92	-	59.5	58.4	57.3	57.3	57.3	56.2
	98	-	54.0	52.9	51.8	51.8	51.8	50.7
	112	-	-	44.1	44.1	43.0	43.0	41.9
	125	-	-	38.6	37.5	37.5	36.4	36.4
	138	-	-	-	32.0	32.0	30.9	30.9
	151	-	-	-	-	27.6	27.6	26.5
164	-	-	-	-	24.3	24.3	23.1	
177	-	-	-	-	-	20.9	19.8	
190	-	-	-	-	-	-	17.6	
203	-	-	-	-	-	-	15.4	

Demag CC2600



26'



164 Tons



88°

Main Boom (ft)	Lift Radius (ft)	Lifting Capacity						
		Luffing Jib (ft)						
		79'	98'	118'	138'	157'	177'	197'
157'	46	157.6	-	-	-	-	-	-
	52	129.0	127.9	-	-	-	-	-
	59	109.1	108.0	108.0	-	-	-	-
	66	94.8	93.7	92.6	91.5	-	-	-
	72	82.7	81.6	81.6	80.5	80.5	-	-
	79	73.9	72.8	71.7	70.5	70.5	70.5	69.4
	85	66.1	65.0	63.9	63.9	62.8	62.8	61.7
	92	0.0	58.4	58.4	57.3	57.3	56.2	56.2
	98	-	52.9	52.9	51.8	51.8	50.7	50.7
	112	-	-	44.1	43.0	43.0	43.0	41.9
	125	-	-	37.5	36.4	36.4	36.4	35.3
	138	-	-	-	32.0	32.0	30.9	30.9
	151	-	-	-	-	27.6	26.5	26.5
	164	-	-	-	-	24.3	23.1	23.1
	177	-	-	-	-	-	20.9	19.8
190	-	-	-	-	-	-	17.6	
203	-	-	-	-	-	-	15.4	
177'	52	127.9	127.9	-	-	-	-	-
	59	108.0	108.0	106.9	-	-	-	-
	66	93.7	92.6	92.6	91.5	-	-	-
	72	81.6	81.6	80.5	79.4	79.4	-	-
	79	72.8	71.7	71.7	70.5	70.5	69.4	-
	85	65.0	63.9	63.9	62.8	62.8	62.8	61.7
	92	-	58.4	57.3	56.2	56.2	56.2	55.1
	98	-	52.9	51.8	51.8	51.8	50.7	50.7
	112	-	0.0	44.1	43.0	43.0	41.9	41.9
	125	-	-	37.5	36.4	36.4	35.3	35.3
	138	-	-	-	30.9	30.9	30.9	29.8
	151	-	-	-	-	27.6	26.5	26.5
	164	-	-	-	-	24.3	23.1	23.1
	177	-	-	-	-	-	19.8	19.8
	190	-	-	-	-	-	-	17.6
203	-	-	-	-	-	-	15.4	
197'	59	-	106.9	105.8	-	-	-	-
	66	-	91.5	91.5	90.4	-	-	-
	72	-	80.5	79.4	79.4	77.2	-	-
	79	-	71.7	70.5	69.4	69.4	69.4	-
	85	-	63.9	62.8	62.8	62.8	61.7	-
	92	-	57.3	57.3	56.2	56.2	55.1	55.1
	98	-	51.8	51.8	50.7	50.7	50.7	49.6
	112	-	-	43.0	41.9	41.9	41.9	41.9
	125	-	-	36.4	36.4	36.4	35.3	35.3
	138	-	-	-	30.9	30.9	30.9	29.8
	151	-	-	-	-	26.5	26.5	25.4
	164	-	-	-	-	23.1	23.1	22.0
	177	-	-	-	-	-	19.8	19.8
	190	-	-	-	-	-	-	16.5
	203	-	-	-	-	-	-	14.3

Demag CC2600



26'



164 Tons



15m

Main Boom (ft)	Lift Radius (ft)	Lift Capacity(Tons)					
		Superlift Ballast (Tons)					
		0	55	110	165	220	275
98 ft	23	473.2	550.8	-	-	-	-
	26	397.6	515.5	553.6	-	-	-
	29	323.8	457.1	523.4	555.6	-	-
	33	254.9	380.7	468.0	521.5	-	-
	39	192.4	290.0	384.4	455.0	494.0	-
	46	147.4	224.5	300.4	376.3	428.2	-
	52	123.3	188.2	252.0	316.9	377.8	-
	59	101.6	156.8	210.9	266.1	320.1	365.2
	65	88.4	137.6	185.6	233.7	281.7	329.9
	72	76.4	119.5	161.5	204.7	246.7	289.8
	79	67.0	105.4	142.8	181.2	219.6	-
	85	60.9	95.3	130.7	165.1	200.5	-
92	53.9	85.8	117.7	149.6	181.5	-	
118 ft	23	505.9	523.4	-	-	-	-
	26	400.1	503.2	550.3	-	-	-
	30	322.9	455.3	521.0	-	-	-
	33	253.8	379.6	465.9	518.2	-	-
	39	191.3	288.9	383.2	452.7	491.8	-
	46	146.3	222.3	299.3	375.2	426.0	-
	52	121.1	186.0	250.9	315.8	375.6	-
	59	100.5	154.6	209.8	263.9	319.0	363.0
	66	87.3	135.4	183.5	232.5	280.6	327.7
	72	75.3	117.3	160.4	202.5	245.6	287.6
	79	64.8	103.2	141.6	179.0	217.4	255.8
	85	58.7	93.1	128.5	162.9	198.3	232.7
92	51.7	83.6	115.5	147.5	179.4	211.2	
98	47.7	76.6	106.5	136.4	165.3	-	
138 ft	26	396.4	482.6	-	-	-	-
	29	321.8	445.3	481.6	-	-	-
	33	251.6	378.5	463.7	478.5	-	-
	39	190.1	286.8	382.0	448.3	482.6	-
	46	145.2	221.2	297.1	374.1	423.8	-
	52	120.0	184.9	249.7	313.6	374.5	-
	59	99.4	153.5	208.7	262.8	317.9	360.8
	65	85.2	134.3	182.4	230.4	279.5	325.5
	72	73.1	116.2	158.2	201.4	234.4	286.5
	79	63.6	102.1	139.4	177.9	216.3	253.7
	85	56.6	92.0	126.3	161.8	196.1	231.5
	92	50.6	82.5	114.4	146.3	177.2	209.1
98	45.6	75.5	105.4	134.2	164.1	194.0	
111	37.8	63.3	88.9	114.4	139.9	-	
124	32.3	54.5	76.7	99.9	122.2	-	

Demag CC2600



26'



164 Tons



15m

Main Boom (ft)	Lift Radius (ft)	Lift Capacity(Tons)					
		Superlift Ballast (Tons)					
		0	55	110	165	220	275
157 ft	29	316.4	444.3	-	-	-	-
	33	250.5	377.4	433.7	-	-	-
	39	189.0	285.7	379.3	439.0	-	-
	46	144.1	220.1	296.0	371.9	421.6	-
	52	118.9	183.8	247.6	312.5	372.3	-
	59	97.2	152.4	206.5	261.7	315.7	359.7
	65	84.0	132.2	181.2	229.3	277.3	324.4
	72	72.0	114.0	157.1	199.2	242.3	284.3
	79	62.5	99.9	138.3	176.7	214.1	252.5
	85	55.5	89.8	125.2	159.6	195.0	229.4
	92	48.4	80.3	112.2	144.2	176.1	208.0
	98	44.4	73.3	103.2	133.1	161.9	191.9
	111	35.6	62.2	87.7	113.3	138.8	-
124	30.0	52.3	75.6	97.8	120.0	-	
138	24.2	45.1	64.9	84.7	105.6	-	
177 ft	29	345.8	-	-	-	-	-
	33	274.5	383.3	-	-	-	-
	39	207.0	302.6	390.1	-	-	-
	46	157.3	234.4	310.3	384.0	-	-
	52	130.1	195.0	259.9	324.6	377.3	-
	59	107.1	162.3	216.4	271.6	325.6	361.9
	65	92.9	141.1	189.1	238.2	286.3	328.6
	72	78.6	121.7	163.8	206.9	249.0	292.0
	79	68.0	106.5	144.9	182.3	220.7	259.2
	85	61.0	96.4	130.8	166.2	200.5	236.0
	92	53.9	85.8	117.7	149.6	181.6	212.4
	98	48.9	78.8	107.6	137.6	167.5	196.3
	111	40.1	65.6	91.1	116.6	142.2	167.7
124	33.4	55.6	77.8	101.1	123.3	146.6	
138	27.5	47.3	67.1	88.0	107.8	127.7	
151	23.1	41.9	59.5	78.2	95.8	114.6	
197 ft	29	344.7	-	-	-	-	-
	33	273.4	340.4	-	-	-	-
	39	205.9	299.1	343.5	-	-	-
	46	156.2	232.2	309.2	341.5	-	-
	52	129.0	193.9	258.8	319.3	343.0	-
	59	106.0	160.1	215.3	269.4	324.2	341.9
	65	90.8	139.9	188.0	236.0	285.1	324.7
	72	77.5	120.6	162.7	205.8	247.9	290.8
	79	66.9	105.3	142.7	181.1	219.6	256.9
	85	59.9	94.3	129.6	164.0	199.4	233.8
	92	52.8	84.7	116.6	147.5	179.4	211.3
	98	47.8	76.6	106.5	136.4	165.3	195.2
	111	37.9	64.4	90.0	115.5	141.0	166.6
	124	31.2	54.5	76.7	99.0	122.2	144.4
	138	25.3	46.2	66.0	85.8	105.7	126.5
151	20.9	39.7	58.4	76.0	94.7	112.4	
164	17.6	35.3	51.8	68.4	84.9	101.5	
177	14.4	30.9	46.4	61.8	76.2	91.6	

Demag CC2600



26'



164 Tons



15m



Main Boom (ft)	Lift Radius (ft)	Lift Capacity(Tons)					
		Superlift Ballast (Tons)					
		0	55	110	165	220	275
217 ft	33	273.4	313.6	-	-	-	-
	39	204.9	297.5	314.5	-	-	-
	46	155.1	232.2	308.1	-	-	-
	52	127.9	192.8	257.7	317.7	-	-
	59	104.9	160.1	214.2	268.3	314.5	-
	65	90.7	138.9	186.9	234.9	283.2	316.6
	72	76.4	119.5	161.6	204.7	246.8	289.5
	79	65.8	104.2	142.7	180.0	218.5	256.9
	85	58.8	93.2	128.6	162.9	198.3	232.7
	92	51.7	83.6	115.5	146.4	178.3	210.2
	98	46.7	75.5	105.4	135.3	164.2	194.1
	111	36.8	63.3	88.9	114.4	139.9	165.5
	124	30.1	53.4	75.6	97.9	121.1	143.3
	138	24.2	45.1	64.9	84.7	104.5	124.4
	151	18.7	38.5	56.2	74.9	92.5	111.3
	164	15.4	33.1	49.6	66.2	82.7	99.3
	177	12.2	28.7	44.2	59.6	75.1	90.5
190	-	25.4	39.8	54.1	68.5	82.8	
236 ft	33	272.3	-	-	-	-	-
	39	203.8	293.2	-	-	-	-
	46	155.1	231.1	289.5	-	-	-
	52	126.9	191.7	255.3	291.6	-	-
	59	103.8	159.0	213.1	268.1	290.0	-
	65	89.6	137.8	185.8	234.9	279.9	-
	72	75.3	118.4	160.5	203.6	245.7	288.6
	79	64.7	103.1	141.6	178.9	217.4	255.8
	85	57.7	92.1	127.5	161.8	197.2	231.6
	92	50.6	82.5	114.4	145.3	177.2	209.1
	98	45.6	74.4	104.3	134.2	163.0	193.0
	111	35.7	61.2	87.8	113.3	138.8	164.4
	124	29.0	51.2	74.5	96.8	120.0	142.2
	138	22.0	42.9	63.8	83.6	103.4	123.3
	151	17.6	37.4	55.1	73.8	91.4	110.2
	164	14.3	32.0	48.5	65.1	81.6	98.2
	177	11.1	27.6	43.1	58.5	74.0	89.4
190	-	23.2	38.7	53.0	66.3	80.7	
203	-	19.9	34.3	47.6	60.8	74.1	

Demag CC2600



26'



164 Tons



15m

Main Boom (ft)	Lift Radius (ft)	Lift Capacity(Tons)					
		Superlift Ballast (Tons)					
		0	55	110	165	220	275
256 ft	39	200.9	254.8	-	-	-	-
	46	154.0	229.9	253.5	-	-	-
	52	125.8	190.6	251.5	-	-	-
	59	102.7	157.9	212.0	253.7	-	-
	65	88.5	136.7	184.7	231.6	254.5	-
	72	74.2	117.3	159.4	202.5	243.9	-
	79	63.6	102.0	140.5	177.8	216.3	252.6
	85	56.6	91.0	126.4	160.7	196.1	230.4
	92	49.5	81.4	112.2	144.1	176.1	208.0
	98	44.5	73.3	103.2	132.0	161.9	191.9
	111	34.6	60.1	85.6	111.1	137.7	163.2
	124	26.9	50.1	73.4	95.6	117.9	141.1
	138	20.9	41.8	61.6	82.5	102.3	122.1
	151	16.5	35.2	54.0	71.6	90.3	108.0
	164	12.1	29.8	47.4	64.0	80.5	97.0
	177	-	25.4	42.0	56.3	71.8	87.2
190	-	21.0	36.5	50.8	65.2	79.5	
203	-	17.7	32.1	46.4	58.6	71.9	
216	-	15.5	28.8	42.1	54.2	66.4	
276 ft	39	199.8	-	-	-	-	-
	46	152.9	223.4	-	-	-	-
	52	124.7	189.1	224.8	-	-	-
	59	101.6	156.8	210.7	-	-	-
	65	86.4	135.6	183.6	226.0	-	-
	72	73.1	116.2	158.3	201.3	224.0	-
	79	62.5	100.9	138.3	176.7	215.2	-
	85	55.5	89.9	125.2	159.6	195.0	224.5
	92	48.4	79.2	111.1	143.0	175.0	206.9
	98	42.3	72.2	102.1	130.9	160.8	190.8
	111	33.4	59.0	84.5	110.0	135.6	162.1
	124	25.8	49.0	71.2	94.5	116.7	140.0
	138	18.7	40.7	60.5	80.3	101.2	121.0
	151	14.3	34.1	52.9	70.5	89.2	106.9
	164	11.0	28.7	46.3	62.9	79.4	95.9
	177	-	24.3	39.8	55.2	70.7	86.1
190	-	19.9	35.4	49.7	64.1	78.4	
203	-	16.6	31.0	44.3	57.5	70.8	
216	-	13.4	26.6	39.9	52.0	65.3	
229	-	11.1	23.3	36.5	47.6	59.8	
243	-	-	20.9	31.9	44.0	55.0	

Demag CC2600



26'



164 Tons



15m



Main Boom (ft)	Lift Radius (ft)	Lift Capacity(Tons)					
		Superlift Ballast (Tons)					
		0	55	110	165	220	275
295 ft	39	199.9	-	-	-	-	-
	46	151.8	198.3	-	-	-	-
	52	124.6	186.2	-	-	-	-
	59	100.5	155.7	193.6	-	-	-
	65	86.3	134.5	181.4	-	-	-
	72	72.0	115.1	157.2	199.0	-	-
	79	61.4	99.8	137.2	175.6	198.2	-
	85	54.4	88.7	124.1	158.5	193.2	-
	92	47.3	78.1	110.0	141.9	173.9	-
	98	41.2	71.1	101.0	129.8	159.7	189.4
	111	31.3	57.9	83.4	108.9	134.4	161.0
	124	24.6	47.9	70.1	93.4	115.6	138.9
	138	17.6	39.6	59.4	79.2	100.1	119.9
	151	13.2	31.9	51.8	69.4	88.1	105.8
	164	-	26.5	44.1	61.8	78.3	94.8
	177	-	22.1	38.7	54.1	69.6	85.0
	190	-	18.8	33.2	48.6	63.0	76.3
	203	-	15.5	28.8	43.2	56.4	69.7
216	-	12.3	25.5	38.8	50.9	63.1	
229	-	-	22.2	34.4	46.5	58.6	
243	-	-	18.7	30.8	41.8	52.9	
256	-	-	16.5	27.5	38.6	49.6	

Demag CC2600



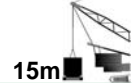
26'



164 Tons



85°



15m

Main Boom (ft)	Fly Jib (ft)	Lift Radius (ft)	Lift Capacity (Tons)				
			Superlift Ballast (Tons)				
			0	55	110	165	220
138'	78'	53	137.8	199.5	260.1	281.1	-
		59	115.7	168.7	221.6	274.5	-
		65	100.3	146.6	192.9	239.2	272.3
		72	87.1	129.0	169.8	210.5	252.4
		79	77.2	114.6	152.1	188.5	226.0
		85	69.4	102.5	136.7	170.9	203.9
		92	62.8	93.7	124.6	155.4	181.9
	98'	59	114.6	167.6	220.5	239.2	-
		66	98.1	144.4	190.7	235.9	-
		72	86.0	126.8	168.7	209.4	233.7
		79	76.1	113.5	149.9	187.4	223.8
		85	68.3	101.4	135.6	168.7	202.8
		92	61.7	92.6	123.5	154.3	185.2
		98	55.1	83.8	112.4	141.1	169.8
	118'	66	98.1	144.4	190.7	201.7	-
		72	86.0	126.8	168.7	200.6	-
		79	76.1	113.5	149.9	187.4	-
		85	68.3	101.4	135.6	168.7	197.3
		92	60.6	91.5	122.4	153.2	184.1
		98	55.1	83.8	112.4	141.1	169.8
		112	46.3	70.5	95.9	120.2	145.5
	137'	65	97.0	143.3	172.0	-	-
		72	84.9	125.7	166.4	-	-
		79	75.0	111.3	148.8	170.9	-
		85	66.1	100.3	133.4	167.6	-
		92	59.5	90.4	121.3	152.1	-
		98	54.0	82.7	111.3	140.0	167.6
		112	45.2	69.4	94.8	119.0	143.3
		125	38.6	59.5	81.6	103.6	125.7
		137	33.1	51.8	71.7	91.5	-
	157'	72	83.8	125.7	145.5	-	-
		79	73.9	111.3	145.5	-	-
		85	66.1	100.3	133.4	-	-
		92	59.5	90.4	121.3	145.5	-
		98	54.0	82.7	111.3	138.9	-
		112	45.2	69.4	93.7	119.0	143.3
		125	37.5	59.5	81.6	103.6	124.6
		137	32.0	51.8	71.7	90.4	110.2
		151	27.6	45.2	62.8	80.5	94.8
	177'	164	24.3	40.8	56.2	72.8	-
		79	72.8	110.2	124.6	-	-
		85	65.0	98.1	124.6	-	-
		92	58.4	89.3	120.2	-	-
		98	52.9	81.6	109.1	123.5	-
		112	43.0	68.3	92.6	117.9	-
		125	36.4	58.4	80.5	101.4	-
		137	30.9	50.7	70.5	89.3	108.0
		151	26.5	44.1	61.7	79.4	97.0
164	23.1	38.6	55.1	71.7	83.8		
177	19.8	35.3	49.6	65.0	-		
190	17.6	32.0	45.2	58.4	-		

Demag CC2600



26'



164 Tons

85°



15m



Main Boom (ft)	Fly Jib (ft)	Lift Radius (ft)	Lift Capacity (Tons)				
			Superlift Ballast (Tons)				
			0	55	110	165	220
138'	197	85	65.0	98.1	104.7	-	-
		92	58.4	89.3	104.7	-	-
		98	52.9	81.6	104.7	-	-
		112	43.0	68.3	92.6	102.5	-
		125	36.4	58.4	80.5	97.0	-
		137	30.9	50.7	70.5	89.3	-
		151	26.5	44.1	61.7	79.4	-
		164	23.1	38.6	55.1	71.7	-
		177	19.8	35.3	49.6	65.0	-
		190	17.6	32.0	45.2	58.4	-
	203	15.4	28.7	40.8	54.0	-	
	216	92	57.3	87.1	87.1	-	-
		98	51.8	80.5	87.1	-	-
		112	41.9	67.2	87.1	-	-
		125	35.3	57.3	79.4	-	-
		137	29.8	49.6	69.4	82.7	-
		151	25.4	43.0	60.6	78.3	-
		164	22.0	38.6	54.0	70.5	-
		177	18.7	34.2	48.5	63.9	-
		190	15.4	29.8	44.1	57.3	-
		203	13.2	27.6	39.7	52.9	-
	216	11.0	24.3	36.4	48.5	-	
	230	-	22.0	33.1	41.9	-	
	236	98	50.7	72.8	-	-	-
		112	41.9	67.2	72.8	-	-
		125	35.3	57.3	72.8	-	-
		137	29.8	49.6	68.3	-	-
		151	25.4	43.0	60.6	71.7	-
		164	20.9	37.5	54.0	69.4	-
		177	17.6	33.1	48.5	62.8	-
		190	15.4	29.8	43.0	57.3	-
		203	13.2	26.5	39.7	51.8	-
		216	11.0	24.3	35.3	47.4	-
	230	-	20.9	33.1	41.9	-	
	243	-	18.7	29.8	39.7	-	
	256	112	40.8	59.5	59.5	-	-
		125	34.2	56.2	59.5	-	-
		137	28.7	48.5	58.4	-	-
		151	24.3	41.9	52.9	-	-
		164	19.8	36.4	47.4	58.4	-
		177	16.5	32.0	43.0	58.4	-
		190	14.3	28.7	38.6	56.2	-
203		12.1	25.4	35.3	50.7	-	
216		-	22.0	32.0	46.3	-	
230		-	19.8	28.7	41.9	-	
243	-	17.6	26.5	39.7	-		
256	-	15.4	-	36.4	-		

Demag CC2600



26'



164 Tons



85°



15m

Main Boom (ft)	Fly Jib (ft)	Lift Radius (ft)	Lift Capacity (Tons)					
			Superlift Ballast (Tons)					
			0	55	110	165	220	
157'	98	59	112.4	165.3	208.3	0.0	-	
		66	97.0	143.3	189.6	208.3	-	
		72	84.9	125.7	166.4	206.1	-	
		79	75.0	112.4	148.8	186.3	-	
		85	67.2	100.3	134.5	167.6	199.5	
		92	60.6	91.5	122.4	153.2	184.1	
		98	54.0	82.7	111.3	140.0	168.7	
		112	45.2	70.5	94.8	120.2	142.2	
	118'	98	66	97.0	143.3	177.5	-	-
			72	84.9	125.7	166.4	-	-
			79	75.0	111.3	148.8	176.4	-
			85	67.2	100.3	134.5	167.6	-
			92	59.5	90.4	121.3	153.2	-
			98	54.0	82.7	111.3	140.0	168.7
			112	45.2	70.5	94.8	119.0	142.2
			125	38.6	60.6	81.6	103.6	125.7
	138	98	72	82.7	124.6	153.2	-	-
			79	73.9	110.2	147.7	-	-
			85	65.0	99.2	132.3	152.1	-
			92	58.4	89.3	120.2	151.0	-
			98	52.9	81.6	110.2	138.9	-
			112	44.1	68.3	93.7	117.9	143.3
			125	37.5	59.5	80.5	102.5	124.6
			137	32.0	51.8	70.5	90.4	108.0
	157	98	151	27.6	45.2	62.8	80.5	-
			79	72.8	110.2	131.2	-	-
			85	65.0	99.2	131.2	-	-
			92	58.4	89.3	120.2	-	-
			98	52.9	81.6	110.2	130.1	-
			112	44.1	68.3	93.7	117.9	-
			125	37.5	58.4	80.5	102.5	124.6
			137	32.0	50.7	70.5	90.4	110.2
	177	98	151	27.6	45.2	62.8	80.5	97.0
			164	24.3	39.7	56.2	71.7	-
			85	63.9	97.0	113.5	-	-
			92	57.3	88.2	113.5	-	-
			98	51.8	80.5	108.0	-	-
			112	43.0	67.2	91.5	110.2	-
			125	35.3	57.3	79.4	101.4	-
			137	30.9	49.6	69.4	89.3	-
			151	26.5	44.1	61.7	79.4	-
			164	22.0	38.6	55.1	70.5	-
	197	98	177	18.7	34.2	49.6	63.9	-
			190	16.5	30.9	44.1	58.4	-
			92	57.3	88.2	95.9	-	-
			98	51.8	80.5	95.9	-	-
			112	43.0	67.2	92.6	-	-
			125	36.4	57.3	79.4	92.6	-
137			30.9	49.6	69.4	87.1	-	
151			26.5	44.1	61.7	79.4	-	
164			22.0	38.6	55.1	70.5	-	
177			18.7	34.2	49.6	63.9	-	
190	16.5	30.9	44.1	58.4	-			
203	14.3	27.6	40.8	52.9	-			

Demag CC2600



26'



164 Tons

85°



15m



Main Boom (ft)	Fly Jib (ft)	Lift Radius (ft)	Lift Capacity (Tons)				
			Superlift Ballast (Tons)				
			0	55	110	165	220
157'	217	92	56.2	81.6	-	-	-
		98	50.7	79.4	81.6	-	-
		112	41.9	66.1	81.6	-	-
		125	35.3	56.2	78.3	-	-
		137	29.8	48.5	68.3	79.4	-
		151	25.4	43.0	60.6	76.1	-
		164	20.9	37.5	54.0	69.4	-
		177	17.6	33.1	48.5	62.8	-
		190	15.4	29.8	43.0	57.3	-
		203	13.2	26.5	39.7	51.8	-
	243	11.0	23.1	35.3	47.4	-	
	256	-	20.9	33.1	43.0	-	
	236	98	49.6	68.3	-	-	-
		112	40.8	66.1	68.3	-	-
		125	34.2	56.2	68.3	-	-
		137	28.7	48.5	68.3	-	-
		151	24.3	41.9	59.5	68.3	-
		164	20.9	37.5	52.9	67.2	-
		177	17.6	33.1	47.4	62.8	-
		190	14.3	28.7	43.0	56.2	66.1
		203	12.1	26.5	38.6	51.8	60.6
		243	-	23.1	35.3	47.4	54.0
	256	-	20.9	32.0	43.0	-	
	243	-	18.7	29.8	39.7	-	
	256	112	40.8	56.2	-	-	-
		125	33.1	55.1	56.2	-	-
		138	27.6	47.4	56.2	-	-
		151	23.1	41.9	56.2	-	-
		164	19.8	36.4	52.9	55.1	-
		177	16.5	32.0	46.3	55.1	-
		190	13.2	28.7	41.9	55.1	-
		203	11.0	25.4	37.5	50.7	-
		216	-	22.0	34.2	46.3	52.9
230		-	19.8	30.9	41.9	48.5	
243		-	17.6	28.7	38.6	43.0	
256		-	15.4	26.5	36.4	-	
269		-	13.2	24.3	30.9	-	

Demag CC2600



26'



164 Tons



85°



15m

Main Boom (ft)	Fly Jib (ft)	Lift Radius (ft)	Lift Capacity (Tons)				
			Superlift Ballast (Tons)				
			0	55	110	165	220
177	118	66	94.8	141.1	158.7	-	-
		72	82.7	124.6	158.7	-	-
		79	73.9	110.2	147.7	-	-
		85	65.0	99.2	133.4	153.2	-
		92	58.4	89.3	120.2	149.9	-
		98	52.9	81.6	110.2	138.9	-
		112	44.1	69.4	93.7	117.9	-
		125	37.5	59.5	81.6	102.5	-
	138	32.0	51.8	71.7	90.4	-	
	136	72	81.6	122.4	137.8	-	-
		79	71.7	109.1	137.8	-	-
		85	63.9	98.1	131.2	-	-
		92	57.3	88.2	119.0	133.4	-
		98	51.8	80.5	109.1	131.2	-
		112	43.0	67.2	92.6	116.8	-
		125	36.4	58.4	80.5	101.4	-
		138	30.9	50.7	70.5	89.3	-
	151	26.5	44.1	61.7	79.4	-	
	157	79	71.7	109.1	116.8	-	-
		85	63.9	98.1	116.8	-	-
		92	57.3	88.2	116.8	-	-
		98	51.8	80.5	109.1	-	-
		112	43.0	67.2	92.6	113.5	-
		125	36.4	58.4	79.4	101.4	-
		138	30.9	50.7	69.4	89.3	106.9
		151	26.5	44.1	61.7	79.4	97.0
	164	23.1	39.7	55.1	71.7	83.8	
	177	85	62.8	95.9	102.5	-	-
		92	56.2	87.1	102.5	-	-
		98	50.7	79.4	102.5	-	-
		112	41.9	66.1	91.5	101.4	-
		125	35.3	56.2	78.3	98.1	-
		138	29.8	49.6	68.3	88.2	-
		151	25.4	43.0	60.6	78.3	-
		164	20.9	37.5	54.0	70.5	-
		177	18.7	34.2	48.5	62.8	-
		190	15.4	29.8	44.1	57.3	-
	197	92	56.2	87.1	89.3	-	-
		98	50.7	79.4	89.3	-	-
		112	41.9	67.2	89.3	-	-
125		35.3	57.3	79.4	87.1	-	
138		29.8	49.6	69.4	83.8	-	
151		25.4	43.0	60.6	78.3	-	
164		20.9	37.5	54.0	70.5	-	
177		18.7	34.2	48.5	62.8	-	
190		15.4	29.8	44.1	57.3	-	
203	13.2	27.6	39.7	52.9	-		

Demag CC2600



26'



164 Tons



85°



15m

Main Boom (ft)	Fly Jib (ft)	Lift Radius (ft)	Lift Capacity (Tons)					
			Superlift Ballast (Tons)					
			0	55	110	165	220	
177'	216	98	49.6	76.1	76.1	-	-	
		112	40.8	65.0	76.1	-	-	
		125	34.2	56.2	76.1	-	-	
		138	28.7	48.5	67.2	75.0	-	
		151	24.3	41.9	59.5	72.8	-	
		164	19.8	36.4	52.9	69.4	-	
		177	17.6	33.1	47.4	61.7	-	
		190	14.3	28.7	43.0	56.2	-	
		203	12.1	25.4	38.6	51.8	-	
		216	-	23.1	35.3	47.4	-	
	230	-	20.9	32.0	43.0	-		
	236	112	40.8	65.0	65.0	-	-	
		125	33.1	55.1	65.0	-	-	
		138	28.7	47.4	65.0	-	-	
		151	23.1	41.9	59.5	63.9	-	
		164	19.8	36.4	52.9	63.9	-	
		177	16.5	32.0	47.4	61.7	-	
		190	14.3	28.7	41.9	56.2	-	
		203	12.1	25.4	38.6	50.7	-	
		216	-	22.0	35.3	46.3	-	
		230	-	19.8	32.0	43.0	-	
	243	-	17.6	28.7	39.7	-		
	256	112	39.7	52.9	-	-	-	
		125	33.1	52.9	52.9	-	-	
		138	27.6	46.3	52.9	-	-	
		151	23.1	40.8	52.9	-	-	
		164	18.7	35.3	51.8	-	-	
		177	15.4	30.9	46.3	52.9	-	
		190	13.2	27.6	41.9	51.8	-	
		203	11.0	24.3	37.5	49.6	-	
		216	-	20.9	34.2	46.3	-	
		230	-	18.7	30.9	41.9	-	
	197'	118	66	85.0	140.0	140.0	-	-
			72	81.6	122.4	140.0	-	-
			79	71.7	109.1	137.8	-	-
			85	63.9	98.1	131.2	-	-
92			57.3	88.2	119.0	132.3	-	
98			51.8	80.5	109.1	129.0	-	
112			43.0	68.3	92.6	117.9	-	
125			36.4	58.4	80.5	102.5	-	
138			32.0	50.7	70.5	90.4	-	
138			72	80.5	120.2	-	-	-
		79	70.5	108.0	120.2	-	-	
		85	62.8	97.0	120.2	-	-	
		92	56.2	87.1	117.9	-	-	
		98	50.7	79.4	108.0	-	-	
		112	41.9	67.2	91.5	112.4	-	
		125	35.3	57.3	79.4	100.3	-	
		138	29.8	49.6	69.4	88.2	-	
151		26.5	44.1	61.7	79.4	-		

Demag CC2600



26'



164 Tons



85°



15m

Main Boom (ft)	Fly Jib (ft)	Lift Radius (ft)	Lift Capacity (Tons)				
			Superlift Ballast (Tons)				
			0	55	110	165	220
197'	157	79	70.5	104.7	-	-	-
		85	62.8	95.9	104.7	-	-
		92	56.2	87.1	104.7	-	-
		98	50.7	79.4	103.6	-	-
		112	41.9	67.2	91.5	-	-
		125	35.3	57.3	79.4	97.0	-
		138	29.8	49.6	69.4	88.2	-
		151	25.4	43.0	60.6	78.3	-
		164	22.0	38.6	55.1	70.5	-
	177	18.7	34.2	49.6	63.9	-	
	177	85	61.7	92.6	-	-	-
		92	55.1	86.0	92.6	-	-
		98	49.6	78.3	92.6	-	-
		112	40.8	65.0	90.4	-	-
		125	34.2	56.2	77.2	88.2	-
		138	28.7	48.5	67.2	84.9	-
		151	24.3	41.9	59.5	77.2	-
		164	20.9	37.5	52.9	69.4	-
		177	17.6	33.1	47.4	62.8	-
	190	15.4	29.8	43.0	57.3	-	
	197	92	55.1	80.5	-	-	-
		98	49.6	78.3	80.5	-	-
		112	40.8	66.1	80.5	-	-
		125	34.2	56.2	77.2	-	-
		138	28.7	48.5	67.2	76.1	-
		151	24.3	41.9	59.5	72.8	-
		164	20.9	37.5	52.9	69.4	-
		177	17.6	33.1	47.4	62.8	-
		190	15.4	29.8	43.0	57.3	-
	203	13.2	26.5	39.7	51.8	-	
	217	98	48.5	69.4	-	-	-
		112	39.7	63.9	69.4	-	-
		125	33.1	55.1	69.4	-	-
		138	27.6	47.4	67.2	-	-
		151	23.1	40.8	58.4	66.1	-
		164	19.8	36.4	51.8	65.0	-
177		16.5	32.0	46.3	61.7	-	
190		13.2	28.7	41.9	56.2	-	
203		11.0	25.4	38.6	50.7	-	
216		-	22.0	34.2	46.3	-	
230	-	19.8	32.0	43.0	-		

Demag CC2600



26'



164 Tons

85°



15m



Main Boom (ft)	Fly Jib (ft)	Lift Radius (ft)	Lift Capacity (Tons)				
			Superlift Ballast (Tons)				
			0	55	110	165	220
197'	236	112	39.7	59.5	-	-	-
		125	33.1	54.0	59.5	-	-
		138	27.6	47.4	59.5	-	-
		151	23.1	40.8	58.4	-	-
		164	18.7	35.3	51.8	57.3	-
		177	16.5	32.0	46.3	57.3	-
		190	13.2	27.6	41.9	55.1	-
		203	11.0	24.3	37.5	50.7	-
		216	-	22.0	34.2	46.3	-
		230	-	19.8	30.9	41.9	-
		243	-	17.6	28.7	38.6	-
	256	112	38.6	47.4	-	-	-
		125	32.0	47.4	-	-	-
		138	26.5	46.3	47.4	-	-
		151	22.0	39.7	47.4	-	-
		164	17.6	35.3	47.4	-	-
		177	15.4	30.9	45.2	-	-
		190	12.1	26.5	40.8	46.3	-
		203	-	23.1	36.4	45.2	-
		216	-	20.9	33.1	45.2	-
		230	-	18.7	29.8	41.9	-
		243	-	16.5	27.6	38.6	-
		256	-	14.3	25.4	35.3	-
		269	-	12.1	23.1	32.0	-
216'	138	79	69.4	105.8	106.9	-	-
		85	61.7	94.8	106.9	-	-
		92	55.1	86.0	104.7	-	-
		98	49.6	78.3	102.5	-	-
		112	40.8	66.1	90.4	-	-
		125	34.2	56.2	78.3	94.8	-
		138	29.8	48.5	68.3	88.2	-
		151	25.4	43.0	60.6	78.3	-
	157	79	69.4	92.6	-	-	-
		85	61.7	92.6	-	-	-
		92	55.1	86.0	92.6	-	-
		98	49.6	78.3	92.6	-	-
		112	40.8	66.1	88.2	-	-
		125	34.2	56.2	78.3	-	-
		138	29.8	48.5	68.3	81.6	-
		151	25.4	43.0	60.6	78.3	-
		164	20.9	37.5	54.0	69.4	-
	177	18.7	34.2	48.5	62.8	-	
	177	85	59.5	81.6	-	-	-
		92	54.0	81.6	-	-	-
		98	48.5	77.2	81.6	-	-
		112	39.7	63.9	81.6	-	-
		125	33.1	55.1	76.1	-	-
		138	27.6	47.4	67.2	76.1	-
		151	23.1	41.9	58.4	73.9	-
		164	19.8	36.4	52.9	68.3	-
		177	16.5	32.0	47.4	61.7	-
	190	14.3	28.7	43.0	56.2	-	

Demag CC2600



26'



164 Tons

85°



15m



Main Boom (ft)	Fly Jib (ft)	Lift Radius (ft)	Lift Capacity (Tons)					
			Superlift Ballast (Tons)					
			0	55	110	165	220	
216'	197	92	54.0	72.8	-	-	-	
		98	48.5	72.8	-	-	-	
		112	39.7	63.9	72.8	-	-	
		125	33.1	55.1	71.7	-	-	
		138	27.6	47.4	67.2	-	-	
		151	23.1	41.9	58.4	67.2	-	
		164	19.8	36.4	52.9	65.0	-	
		177	16.5	32.0	47.4	61.7	-	
		190	14.3	28.7	43.0	56.2	-	
		203	12.1	26.5	38.6	51.8	-	
	216	11.0	23.1	35.3	47.4	-		
	216	216	98	47.4	62.8	-	-	-
			112	38.6	62.8	62.8	-	-
			125	32.0	54.0	62.8	-	-
			138	26.5	46.3	61.7	-	-
			151	22.0	40.8	58.4	-	-
			164	18.7	35.3	51.8	59.5	-
			177	15.4	30.9	46.3	57.3	-
			190	13.2	27.6	41.9	55.1	-
			203	11.0	24.3	37.5	50.7	-
			216	-	22.0	34.2	46.3	-
	216	236	112	38.6	55.1	-	-	-
			125	32.0	54.0	55.1	-	-
			138	26.5	46.3	54.0	-	-
			151	22.0	39.7	52.9	-	-
			164	18.7	35.3	50.7	-	-
			177	15.4	30.9	46.3	51.8	-
			190	12.1	27.6	40.8	50.7	-
			203	-	24.3	37.5	49.6	-
			216	-	20.9	34.2	45.2	-
			230	-	18.7	30.9	41.9	-
	216	256	112	36.4	43.0	-	-	-
			125	30.9	43.0	-	-	-
			138	25.4	43.0	43.0	-	-
			151	20.9	39.7	43.0	-	-
			164	17.6	34.2	41.9	-	-
			177	14.3	29.8	41.9	-	-
			190	12.1	26.5	40.8	40.8	-
			203	-	23.1	36.4	40.8	-
			216	-	19.8	33.1	39.7	-
230			-	17.6	29.8	38.6	-	
243	-	15.4	26.5	37.5	-			
256	-	13.2	24.3	35.3	-			
269	-	12.1	22.0	32.0	-			

Demag CC2600



26'



164 Tons

85°



15m



Main Boom (ft)	Fly Jib (ft)	Lift Radius (ft)	Lift Capacity (Tons)				
			Superlift Ballast (Tons)				
			0	55	110	165	220
236'	157	85	59.5	83.8	-	-	-
		92	54.0	83.8	-	-	-
		98	48.5	77.2	83.8	-	-
		112	39.7	65.0	79.4	-	-
		125	33.1	55.1	77.2	-	-
		138	28.7	47.4	67.2	75.0	-
		151	24.3	41.9	59.5	72.8	-
		164	20.9	37.5	52.9	69.4	-
	177	17.6	33.1	47.4	62.8	-	
	177	92	51.8	71.7	-	-	-
		98	47.4	71.7	-	-	-
		112	38.6	62.8	71.7	-	-
		125	32.0	54.0	69.4	-	-
		138	26.5	46.3	66.1	-	-
		151	22.0	40.8	58.4	66.1	-
		164	18.7	35.3	51.8	65.0	-
		177	15.4	32.0	46.3	60.6	-
	190	13.2	27.6	41.9	55.1	-	
	197	98	47.4	63.9	-	-	-
		112	38.6	62.8	63.9	-	-
		125	32.0	54.0	62.8	-	-
		138	26.5	46.3	61.7	-	-
		151	23.1	40.8	58.4	-	-
		164	18.7	35.3	51.8	59.5	-
		177	15.4	32.0	46.3	58.4	-
		190	13.2	27.6	41.9	55.1	-
	203	12.1	25.4	38.6	50.7	-	
	216	-	23.1	35.3	46.3	-	
	216	98	46.3	55.1	0.0	-	-
		112	37.5	55.1	0.0	-	-
		125	30.9	52.9	55.1	-	-
		138	25.4	45.2	54.0	-	-
		151	20.9	39.7	52.9	-	-
		164	17.6	35.3	50.7	-	-
		177	14.3	30.9	45.2	50.7	-
		190	12.1	26.5	40.8	49.6	-
		203	-	24.3	36.4	48.5	-
		216	-	20.9	33.1	45.2	-
	230	-	18.7	30.9	41.9	-	
	236	112	36.4	47.4	-	-	-
		125	30.9	47.4	-	-	-
		138	25.4	45.2	46.3	-	-
		151	20.9	39.7	46.3	-	-
		164	17.6	34.2	45.2	-	-
		177	14.3	29.8	45.2	-	-
		190	12.1	26.5	40.8	44.1	-
		203	-	23.1	36.4	43.0	-
		216	-	20.9	33.1	41.9	-
230		-	17.6	29.8	40.8	-	
243	-	16.5	27.6	38.6	-		
256	-	14.3	25.4	35.3	-		

Demag CC2600



26'



164 Tons

85°



15m



Main Boom (ft)	Fly Jib (ft)	Lift Radius (ft)	Lift Capacity (Tons)				
			Superlift Ballast (Tons)				
			0	55	110	165	220
236'	256	112	35.3	41.9	-	-	-
		125	28.7	41.9	-	-	-
		138	24.3	41.9	41.9	-	-
		151	19.8	38.6	40.8	-	-
		164	16.5	33.1	40.8	-	-
		177	13.2	28.7	39.7	-	-
		190	11.0	25.4	38.6	-	-
		203	-	22.0	35.3	37.5	-
		216	-	19.8	32.0	36.4	-
		230	-	17.6	28.7	35.3	-
		243	-	15.4	26.5	34.2	-
		256	-	13.2	24.3	33.1	-
269	-	11.0	22.0	32.0	-		
256'	157	85	58.4	75.0	-	-	-
		92	52.9	75.0	-	-	-
		98	47.4	75.0	75.0	-	-
		112	38.6	63.9	72.8	-	-
		125	32.0	54.0	70.5	-	-
		138	27.6	47.4	66.1	-	-
		151	23.1	40.8	58.4	66.1	-
		164	19.8	36.4	51.8	63.9	-
		177	16.5	32.0	47.4	61.7	-
	177	92	50.7	65.0	-	-	-
		98	45.2	65.0	-	-	-
		112	37.5	61.7	65.0	-	-
		125	30.9	52.9	62.8	-	-
		138	25.4	45.2	60.6	-	-
		151	20.9	39.7	57.3	-	-
		164	17.6	35.3	50.7	57.3	-
		177	15.4	30.9	45.2	55.1	-
		190	12.1	27.6	40.8	52.9	-
	197	98	46.3	57.3	-	-	-
		112	37.5	57.3	-	-	-
		125	30.9	52.9	56.2	-	-
		138	25.4	45.2	54.0	-	-
		151	20.9	39.7	51.8	-	-
		164	17.6	35.3	50.7	-	-
		177	15.4	30.9	45.2	48.5	-
		190	12.1	27.6	40.8	47.4	-
		203	11.0	24.3	37.5	45.2	-
216	-	22.0	34.2	44.1	-		

Demag CC2600



26'



164 Tons

85°



15m



Main Boom (ft)	Fly Jib (ft)	Lift Radius (ft)	Lift Capacity (Tons)					
			Superlift Ballast (Tons)					
			0	55	110	165	220	
APS 4 CORNERS	216	112	35.3	48.5	-	-	-	
		125	29.8	48.5	48.5	-	-	
		138	24.3	45.2	47.4	-	-	
		151	19.8	38.6	45.2	-	-	
		164	16.5	34.2	44.1	-	-	
		177	14.3	29.8	43.0	-	-	
		190	11.0	26.5	39.7	41.9	-	
		203	-	23.1	36.4	40.8	-	
		216	-	19.8	33.1	39.7	-	
		230	-	17.6	29.8	38.6	-	
68,400 lbs	83,800 lbs	112	34.2	41.9	-	-		
57,400 lbs	83,800 lbs	125	28.7	41.9	-	-		
48,600 lbs	81,600 lbs	138	24.3	40.8	40.8	-		
39,600 lbs	77,200 lbs	151	19.8	38.6	39.7	-		
33,000 lbs	66,200 lbs	164	16.5	33.1	38.6	-		
26,400 lbs	59,600 lbs	177	13.2	29.8	37.5	-		
256'	236	190	11.0	25.4	36.4	-	-	
		203	-	22.0	35.3	-	-	
		216	-	19.8	32.0	34.2	-	
		230	-	17.6	29.8	34.2	-	
		243	-	15.4	26.5	33.1	-	
	256	-	13.2	24.3	32.0	-		
	256	256	125	27.6	35.3	-	-	-
			138	22.0	35.3	-	-	-
			151	18.7	34.2	34.2	-	-
			164	15.4	33.1	34.2	-	-
177			12.1	28.7	33.1	-	-	
190			-	24.3	33.1	-	-	
203			-	22.0	32.0	-	-	
216			-	18.7	30.9	30.9	-	
230			-	16.5	28.7	30.9	-	
243			-	14.3	25.4	29.8	-	
256	-	12.1	23.1	28.7	-			
269	-	11.0	20.9	27.6	-			